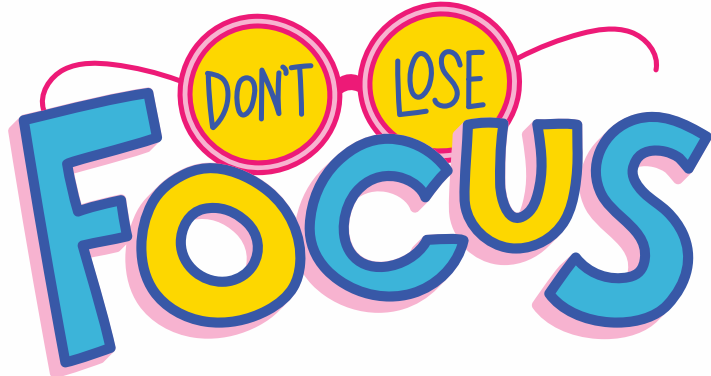


Cycle 4
3ème LCE

GAL(PAL)ENTINE'S TRIVIA CHALLENGE QUIZ



TRIVIA
CHALLENGE
QUIZ



Do's



Don'ts

An illustration of a woman and a man standing next to a large clipboard. The woman, on the left, has dark hair and is wearing a white patterned sweater and dark pants, holding a red clipboard and a pen. The man, on the right, has dark hair and is wearing a red striped shirt and dark pants, pointing towards the clipboard. The clipboard is white with a red clip at the top and is titled 'RULES' in large, bold, dark blue letters. Below the title is a list of five numbered items, each with three horizontal lines for text and a green checkmark in a box to the right. The background is a light green circle on a pink grid pattern.

RULES

1	_____	✓
2	_____	✓
3	_____	✓
4	_____	✓
5	_____	✓

- THERE WILL BE 5 ROUNDS
- YOU WILL PLAY IN TEAMS (A TEAM = 2/3 OF YOUR BEST FRIENDS)
- EACH GOOD ANSWER = 1-2 pts
- EACH BAD ANSWER = -1 pt



- different types of activities (listening, writing, spelling, speaking, matching++)
- 1 scoring sheet / team
- different scoring systems : time based or not
- 1 quiz master (your teacher)
- Judges / referees (X n° of teams)

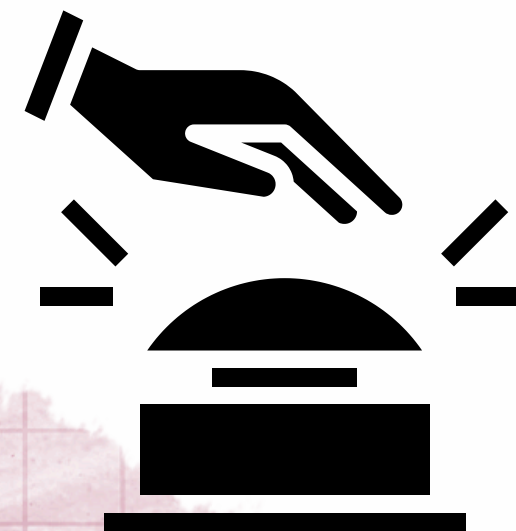
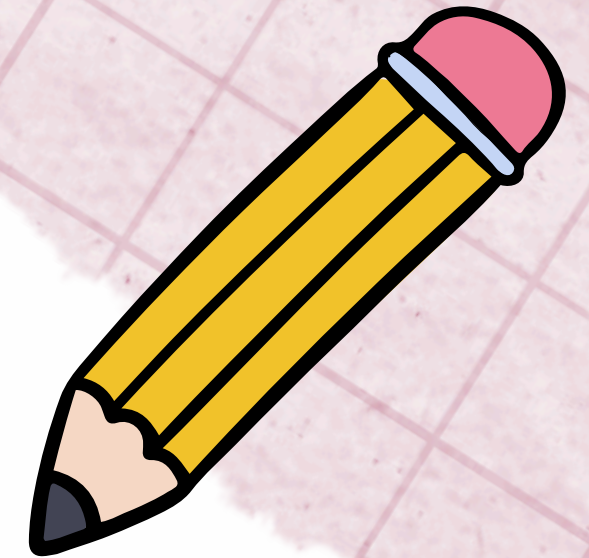
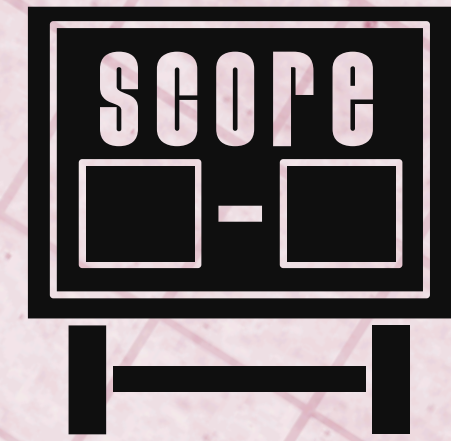
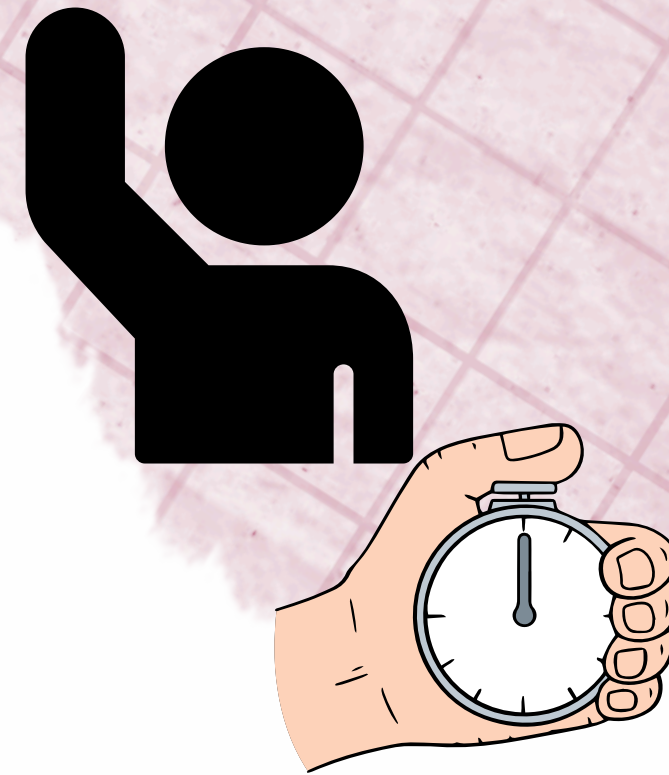


- **EQUIPMENT :**

scoring sheet
answering sheet
pencils
buzzer
timer

- **REMINDER :**

- remain focus (details)
- respect the voice volume level
(don't help the other teams)
- raise your hand and wait until
the referee allows you to talk



READY
STEADY

GO TEAM!!
START

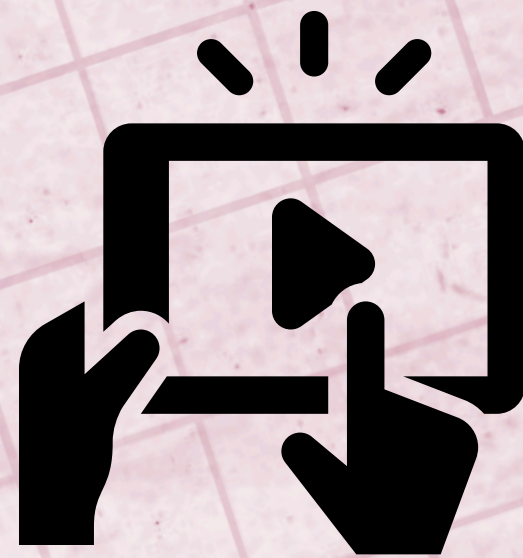


Comprehension

Watch the video and guess
what/who today's quiz is
about .



Write your answer on your
team scoring sheet
(get ready to spell your
chosen word)



1





“ This is what friendship sounds
like “



KEY ANSWERS

FRIENDSHIP

FRIENDS

BFF

BESTIES ...

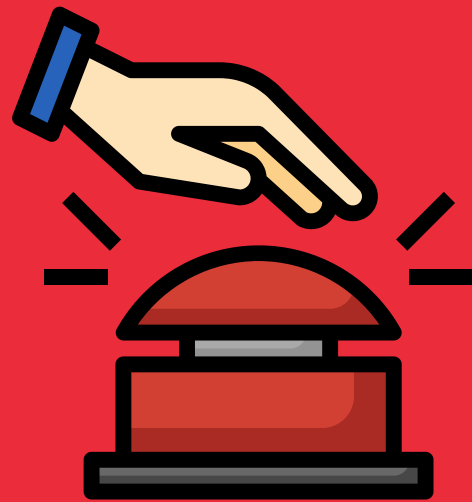
LOVE ?



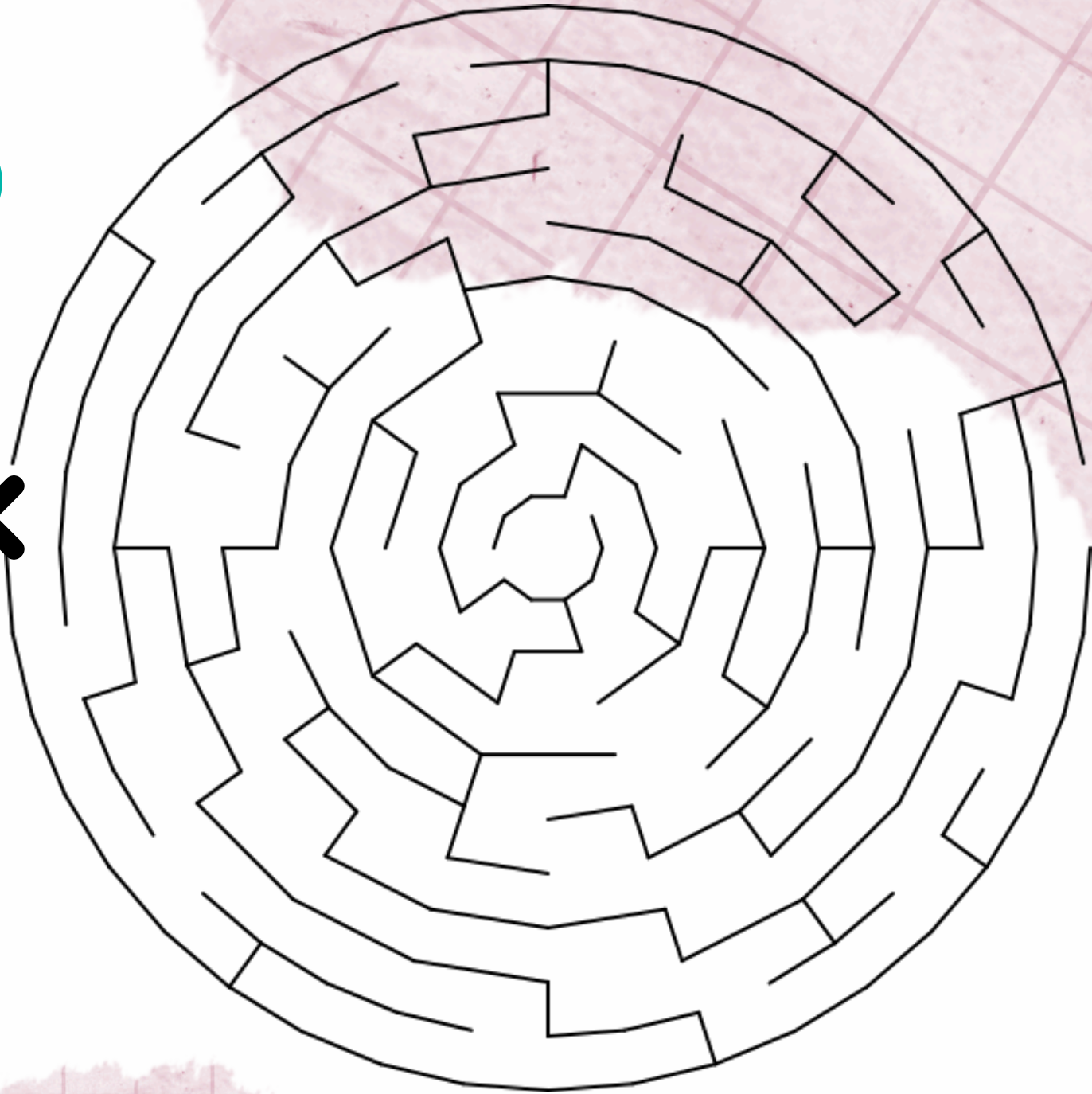
FRIENDSHIP MAZE

Help your friends find
their way to your
house.

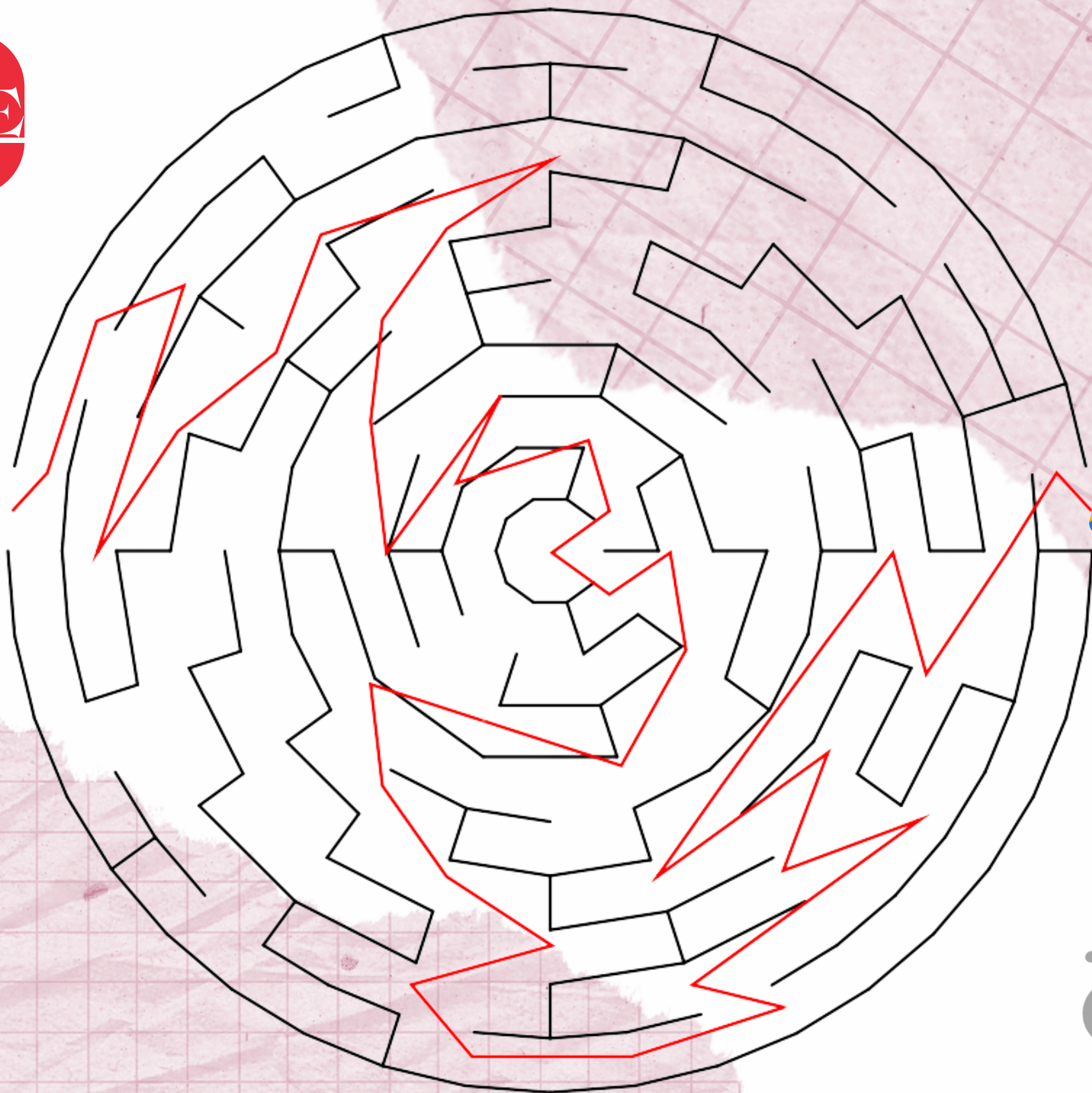
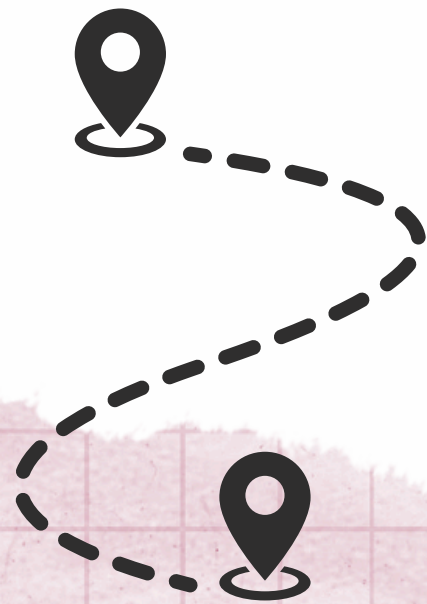
The team that finishes
1st

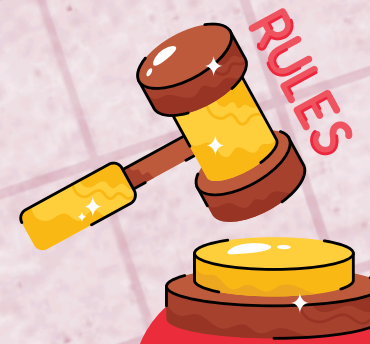


wins the round



FRIENDSHIP MAZE





Language / Grammar

You have 4 minutes to list/find and write 4 words in each of the following categories



TEAM :

SCATTERGORIES / CATEGORIES

FRIENDSHIP / FRIENDS / BESTIES

Fill in the grid with 4 words that fit in with the categories. The team with the most points, wins the round!

	ADJECTIVES	NOUNS	VERBS	
1.	/0.5	/0.5	/0.5	/0.5
2.	/0.5	/0.5	/0.5	/0.5
3.	/0.5	/0.5	/0.5	/0.5
4.	/0.5	/0.5	/0.5	/0.5
TOTAL				

4mins

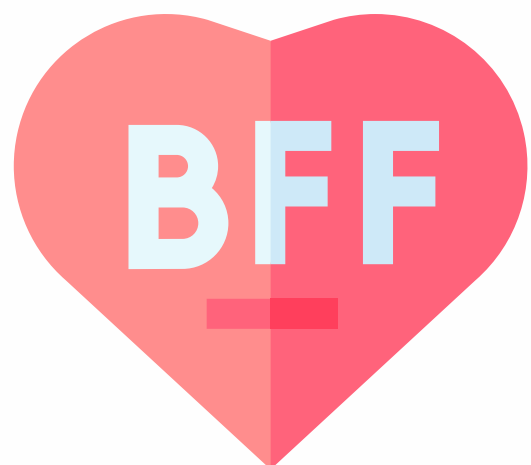


friendship

besties



FRIENDS
Harder to find
IMPOSSIBLE
♥ to forget



KEY ANSWERS

TEAM :

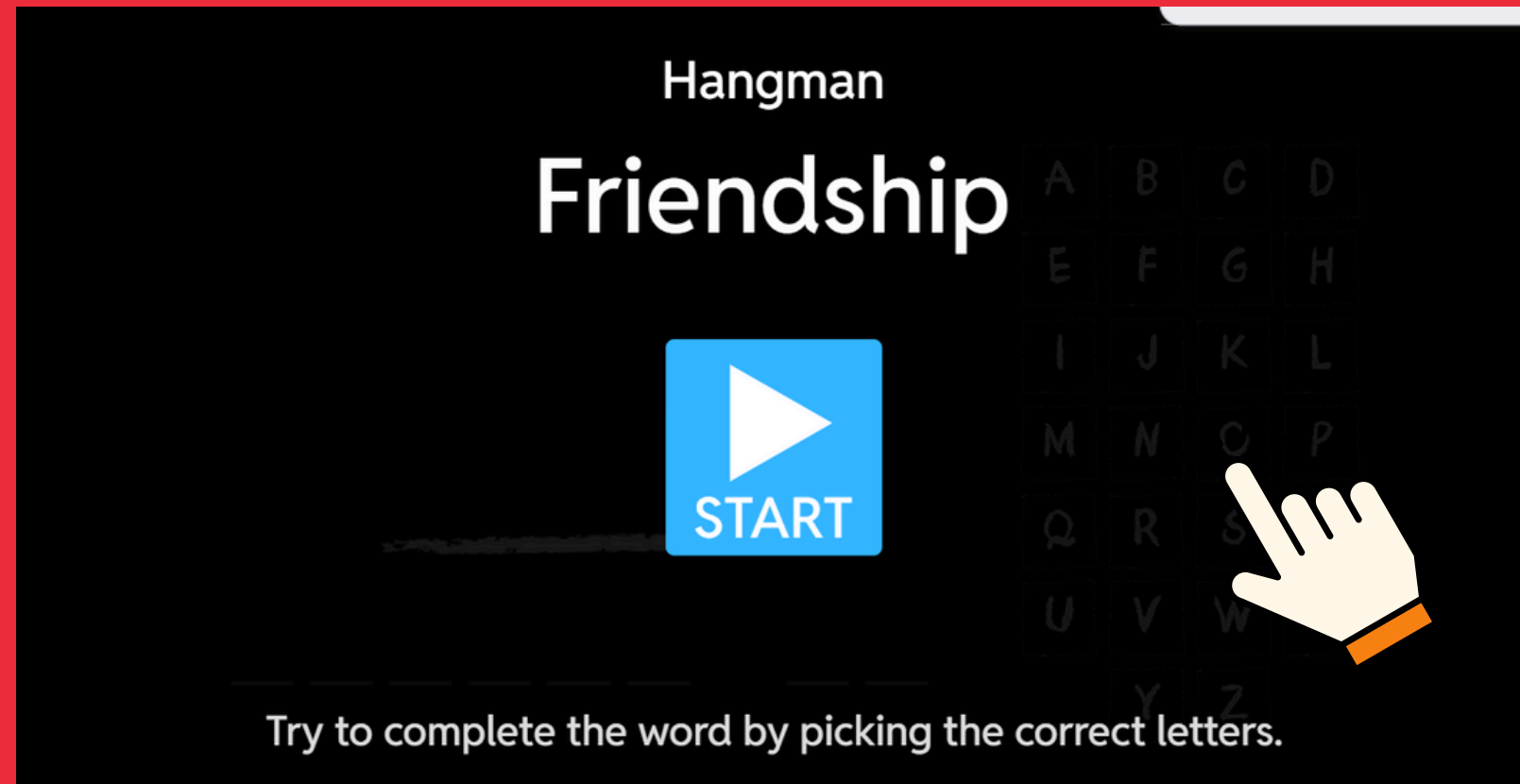


SCATTERGORIES / CATEGORIES

FRIENDSHIP / FRIENDS / BESTIES

Fill in the grid with 4 words that fit in with the categories. The team with the most points, wins the round !

	ADJECTIVES	NOUNS	VERBS	ADVERBS
	Caring-Affectionate Loyal-Sincere Supportive-Friendly Tolerant	Affection-Harmony- Solidarity-Sister Brother-Partner Bro-mate-sidekick Sweetheart-boy Dude-homie-girl love	Go out-Meet up Get along-Befriend- hang out- party	Warmly- kindly- Friendly-Nicely Pleasantly-



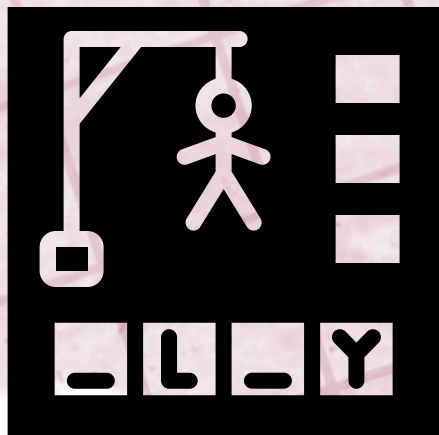
Beat the clock : guess the secret word before the stick figure is hung.

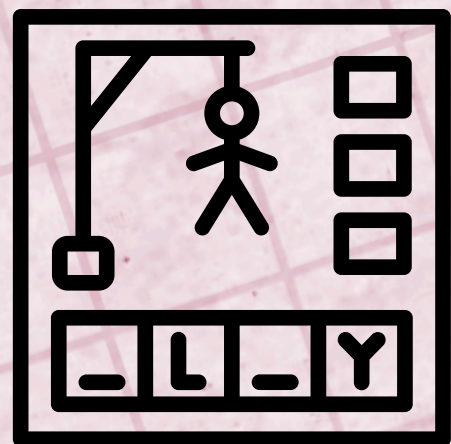
RULES :

Teams take turns selecting letters (5 sc max / letter)

You find a letter - you continue to try guessing the entire word

You fail and make a wrong guess - next team makes a move





1 e
f r i e n d s !

ANSWER

2 s
s h a r e !

3 v
l o v e !

ANSWER

4 e
h e a r t

5 u
f u n !

ANSWER

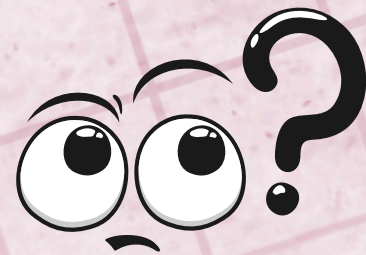
6 w
d r a w i n g ! ✓

HAPPY
FRIENDS
DAY

YAY!

Best
Friend
Day

3



FRIENDSHIP
CUSTOMS AND
CELEBRATIONS



Watch the extract and find the
answers to 5 questions



YAY!



KEY ANSWERS

TEAM :



' Parks & Recreation ' : Season 6, episode 17

Watch the extract. Answer the following questions. The team with the most points, wins the round !

	EVENT (what is it called)	PLACE (where it can take place)	PEOPLE (who is invited)	MEANING OF THE EVENT (what/ who does it celebrate)
	GALENTINE'S DAY /1	RESTAURANT BAR- CAFÉ-LOUNGE /1	FRIENDS BESTIES GIRLFRIENDS /1	CELEBRATE FRIENDSHIP /1

Galentine's

GALENTINE'S TRIVIA GAME



Make guesses in your team
Choose the right answer +
complete questions 1,2,5,6 &
8 with the right preposition
from the box.

TEAM : TOTAL :/10pts (.....bonus)

Galentine's

GALENTINE'S TRIVIA GAME

Choose the right answer. Make guesses in your team. The team with the most points, wins the round !

- What colour of roses most often represent friendship ?
a) Yellow b) Red c) White
- What does BBF stand for ?
a) Big Family Feast b) Big Fun Forever c) Best Friends Forever
- When is Galentine's Day celebrated ?
a) February 14th b) February 13th c) February 12th
- Why is the celebration called GALEntine ?
a) Gal = girls b) It has Irish origins c) To mark the difference between VALEntine's day & GALEntine's day
- What is the meaning of « O » in XOXO ?
a) Kisses b) Love c) Hugs
- What year did Galentine's Day begin ?
a) 2010 b) 1990 c) 2015
- Which TV show popularized Galentine's Day ?
a) « How I met your mother » b) « The Office » c) « Parks & Recreation »
- What percentage of women celebrate Galentine's Day ?
a) 10% b) 20% c) 30%
- Which fictional character invented Galentine's Day ?
a) Leslie Knope b) Rachel Green c) Marge Simpson
- Choose another for that celebration that could also include boys friendship
a) BOYLentine's Day b) ALLentine's Day c) PALentine's Day

Teachers



Galentine's

GALENTINE'S TRIVIA GAME

TEAM : TOTAL :/10pts (.....bonus)

Galentine's

GALENTINE'S TRIVIA GAME

Choose the right answer. Make guesses in your team. The team with the most points, wins the round !

1. What colour of roses most often represent friendship ?
a) **Yellow** b) Red c) White
2. What does BBF stand for ?
a) Big Family Feast b) Big Fun Forever c) **Best Friends Forever**
3. When is Galentine's Day celebrated ?
a) February 14th b) **February 13th** c) February 12th
4. Why is the celebration called GALEntine ?
a) **Gal = girls** b) It has Irish origins c) To mark the difference between VALEntine's day & GALEntine's day
5. What is the meaning of « O » in XOXO ?
a) Kisses b) Love c) **Hugs**
6. What year did Galentine's Day begin ?
a) **2010** b) 1990 c) 2015
7. Which TV show popularized Galentine's Day ?
a) « How I met your mother » b) « The Office » c) **« Parks & Recreation »**
8. What percentage of women celebrate Galentine's Day ?
a) **10%** b) 20% c) 30%
9. Which fictional character invented Galentine's Day ?
a) **Leslie Knope** b) Rachel Green c) Marge Simpson
10. Choose another for that celebration that could also include boys friendship
a) ~~BOYLentine's Day~~ b) ALLAntine's Day c) **PALEntine's Day**

*Bonus : Justify your choice +1pt : **PALS = friends (informal)**

D.GENE Académie de la Guadeloupe

{NOUN}
galentine

LAUGHS AT YOUR JOKES, SAYS YOU LOOK
FANTASTIC WHEN YOU HAVEN'T SLEPT FOR
DAYS, GIVES YOU CHOCOLATE WHEN
YOU'RE SAD, DISLIKES ANYONE WHO WAS
EVER MEAN TO YOU.

SEE ALSO: SECRET KEEPER, CHEERLEADER,
BEST FRIEND.



ANSWERS

Galentine's

FINISH THE PHRASE

4

SPEAKING :

A person from each team picks a number in turn and complete 3 phrases (in turn) you have 15sc/sentence




The team with the most correct answers is the winner!

TEAM : TOTAL :/

Galentine's
FINISH THE PHRASE

SPEAKING : One person from each team picks a number and complete 3 phrases in turn.

THEY SAID	YOU SAY...
1. "If there's a law against friendship, lock me up." Leslie Knope	"If there's a law against friendship ..."
2. "What's Galentine's Day? Oh, it's only the best day of the year." Leslie Knope	"What's Galentine's Day? ..."
3. "I like you and I love you." Leslie Knope	"I like you and"
4. "You are the most beautiful, glowing, sun-goddess ever." Leslie Knope	"You are the most..."
5. "We need to remember what's important in life: friends, waffles, work" Leslie Knope	"We need to remember what's important in life :"
6. "A friend is someone who makes it easy to believe in yourself." — Heidi Wills	"A friend is"
7. "True friends are like diamonds — bright, beautiful, valuable, and always in style." — Nicole Richie	"True friends are like"
8. "I would rather walk with a friend in the dark than alone in the light." — Helen Keller	"I would rather walk with a friend"
9. "I'm so thankful for friendship. It beautifies life so much." — L. M. Montgomery, <i>Anne of Avonlea</i>	"I'm so thankful for friendship. It"
10. "She's my friend because we both know what it's like for people to be jealous of us." — Cher Horowitz, <i>Clueless</i>	"She's my friend because"
11. "Who run the world? Girls." — Beyoncé	"Who run the world?"
12. "When you meet your best friend in real life ... you just know it, and you feel it." — Lili Reinhart	"When you meet your best friend in real life ..."

 **Teachers' Lab**
Groupe de Reflexion Anglaise
Académie Guadeloupaise

D.GENE Académie de La Guadeloupe

Galentine's GIRL POWER SONG MATCH

Match the girl power song with the correct artist on the right.

5

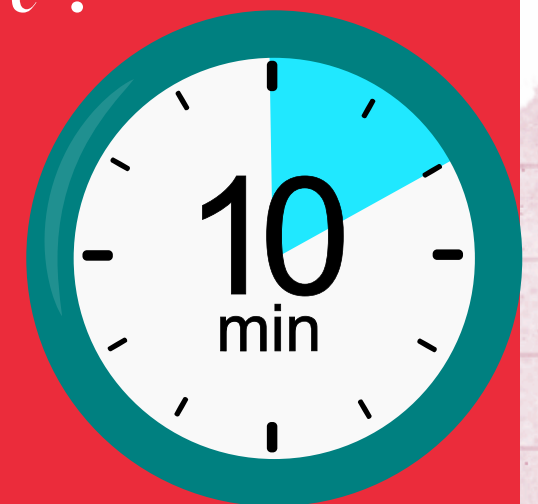
Galentine's GIRL POWER SONG MATCH

Match the girl power song with the correct artist on the right.

SONG	ARTIST
1. "Run the World"	a) Janelle Monáe
2. "Girl on Fire"	b) Mariah Carey
3. "Girls Just Want to Have Fun"	c) toy story
4. "Respect"	d) Jennifer Hudson, Ne-Yo
5. <u>Roar</u>	e) Beyoncé
6. <u>Pretty Girl Rock</u>	f) Kate Perry
7. <u>Q.U.E.E.N</u>	g) Jennifer Lopez
8. <u>Stand by you</u>	h) Cindy Lauper
9. <u>you've got a friend in me</u>	i) Alicia Keys
10. <u>Anytime You Need A Friend</u>	j) Keri Hilson
11. <u>Just Fine</u>	k) Rachel Platten
12. <u>Think Like A Man</u>	l) Mary J. Blige
13. <u>Same Girl</u>	m) Aretha Franklin

MATCHING:

Match the "Girl Power Song" with the correct artist on the right .



The team with the most correct answers is the winner!

Galentine's GIRL POWER SONG MATCH

ANSWERS

KARAOKE TIME

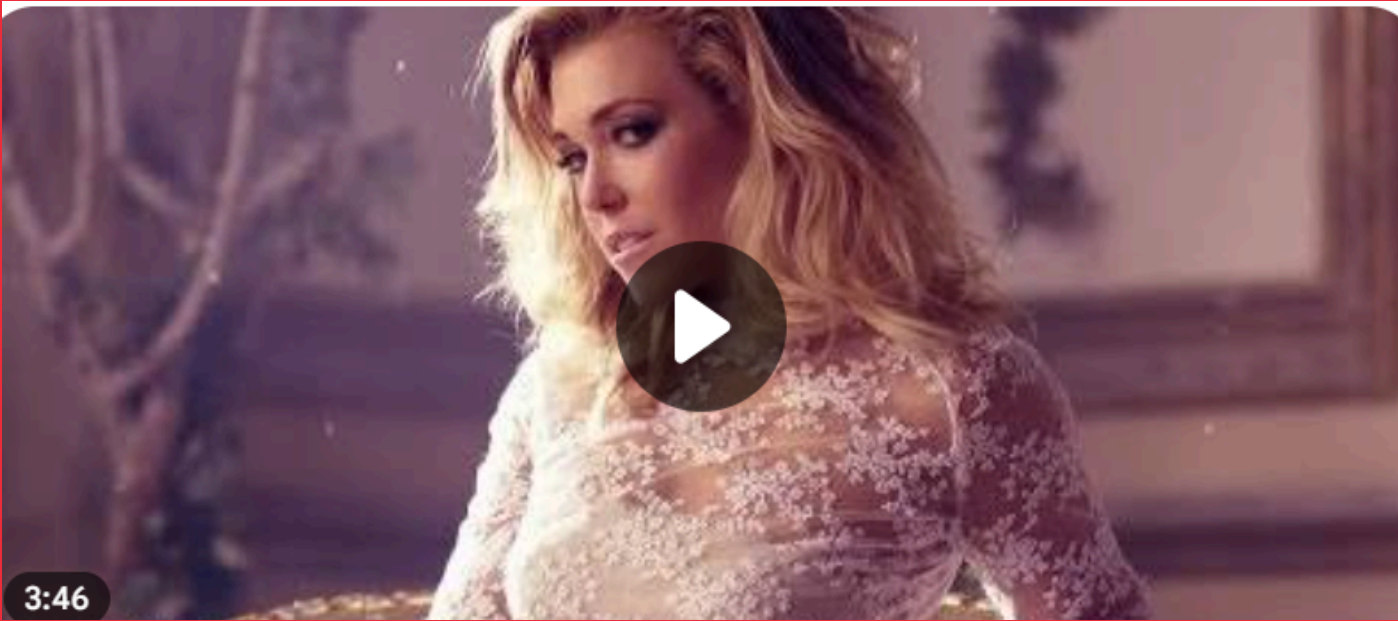
Choose your favourite Gal/Palentine's song from the list and sing along

TEAM : TOTAL :/13pts

**Galentine's
GIRL POWER SONG MATCH**

Match the girl power song with the correct artist on the right.

SONG	ARTIST
1. E "Run the World"	a) Janelle Monáe
2. I "Girl On Fire"	b) Mariah Carey
3. H "Girls Just Want to Have Fun"	c) Toy Story
4. M "Respect"	d) Jennifer Hudson, Ne-Yo
5. F Roar	e) Beyoncé
6. J Pretty Girl Rock	f) Kate Perry
7. A Q.U.E.E.N	g) Jennifer Lopez
8. K Stand by you	h) Cindy Lauper
9. C you've got a friend in me	i) Alicia Keys
10. B Anytime You Need A Friend	j) Keri Hilson
11. L Just Fine	k) Rachel Platten
12. D Think Like A Man	l) Mary J. Blige
13. G Same Girl	m) Aretha Franklin
Total :	



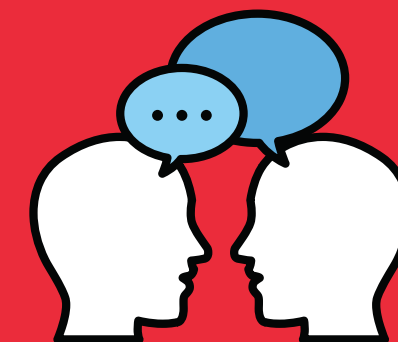
Stand by You

EXPRESS YOURSELF

Your turn :

What did you learn about this
celebration? What do you think
about it ?

Recap today's activity in your team
then report to the class in turn



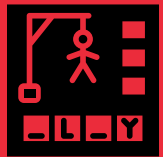
friendship



Resource Page

Useful links :

- This is what friendship sounds like : <https://www.youtube.com/watch?v=xwSaLwVs2PY>
- **MazesForFun** : Maze Generator : https://mazesforfun.com/maze_generator



Hangman : Friendship : <https://wordwall.net/resource/4644203/friendship>

- Parks & Recreation Season 6, episode 17: "Galentine's Day" Youtube resources : <https://www.youtube.com/watch?v=YxrRgy2CDyQ&t=4s>
- Galentine's Day quotes and Captions : <https://www.goodhousekeeping.com/holidays/valentines-day-ideas/a30472475/galentines-day-quotes-instagram-captions/>

- Girl Power songs links cf. worksheet

Valentine's GIRL POWER SONG MATCH	
Match the girl power song with the correct artist on the right	
SONG	ARTIST
1. E "Run the World"	a) Janellie Monde
2. I "Girl on Fire"	b) Mariah Carey
3. H "Girls Just Want to Have Fun"	c) Ivy story
4. M "Respect"	d) Jennifer Hudson, Ne-Yo
5. F "Bad"	e) Beyoncé
6. J "Pretty Girl Rock"	f) Kate Perry
7. A Q.U.E.E.N	g) Jennifer Lopez
8. K "Stand by you"	h) Cindy Lauper
9. C "you are not a friend, oh no"	i) Alicia Keys
10. R "Ain't no Love in the World"	j) Keri Hilson
11. L "Just Fine"	k) Rachel Platten
12. D "Think Like a Man"	l) Mary J. Blige
13. G "Sister Girl"	m) Aretha Franklin
Total :	